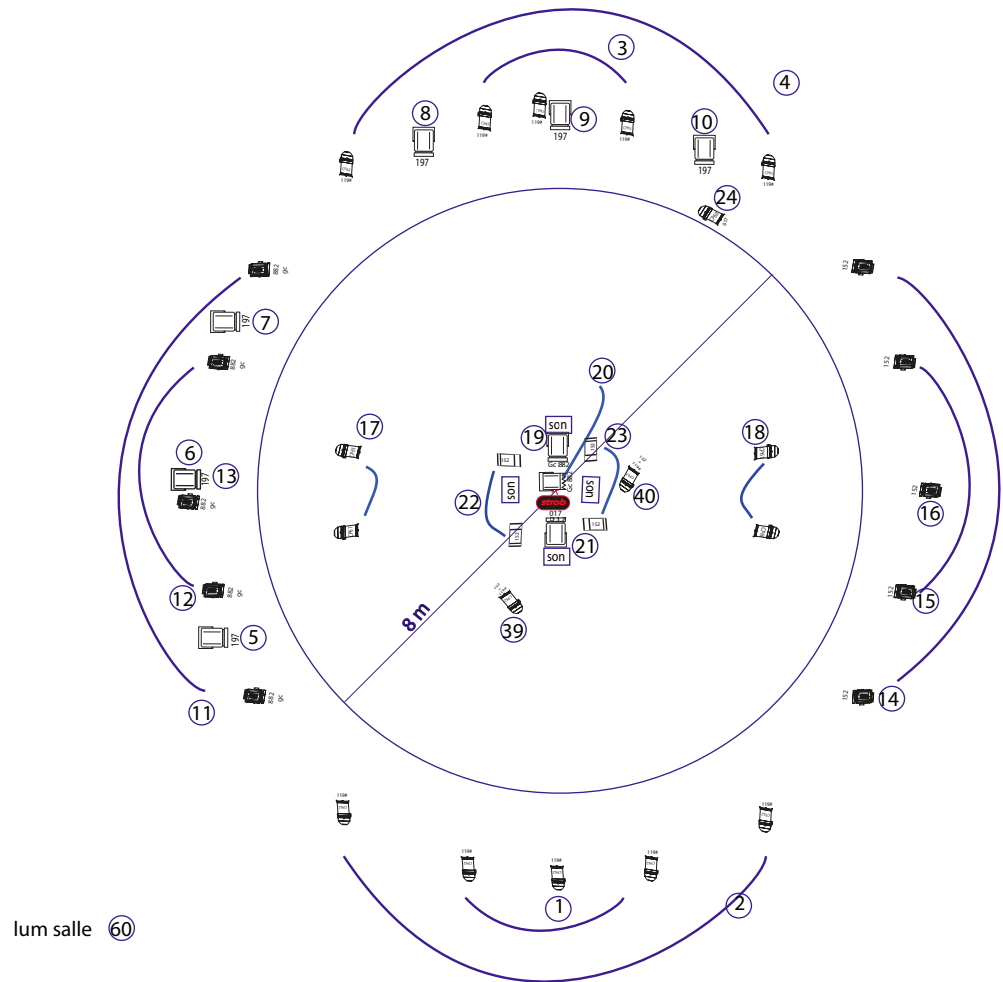









implante grill SANTA MADERA  
1/100



-  1 X fresnel 5 kw
-  4 X pars en cp 61
-  1 X pars en cp 60
-  12 X pars en cp 62
-  10 X Pc martelé 1 kw
-  8 X fresnel 2 kw
-  4 X cycliodes (Lee 151)

face coté regie  
ici

← 1m →